

05.9.12

---

## Census 2011

---

Key Messages and  
possible Impacts  
from the First  
Release of the  
Census 2011 data

---

Doncaster Data Observatory

---

## Introduction

1.1 This report:

- Provides an overview of the key messages from the 2011 Census information that has been released so far.
- Summarises key areas of demographic analysis work underway and planned by the Council and its partners
- Sets out an action plan to improve the co-ordination of this work and to ensure the key messages emerging from it are communicated across the partnership.

## Background

1.2 The Census has collected information about the population every 10 years since 1801 (except in 1941). The latest census in England and Wales took place on 27 March 2011. The data is a quality assured estimate based on the actual response to the Census nationally.

1.3 The statistics collected from the Census are used to understand the similarities and differences in the populations' characteristics locally, regionally and nationally. This information underpins the allocation of billions of pounds of public money through Revenue Support Grant (RSG) to Councils, the Health Service and others.

1.4 These statistics are the first of four releases from the 2011 Census which will take place over the next 18 months. The subsequent releases will cover the key statistics, local characteristics and detailed local characteristics therefore this first release is limited to only population information. This data will be used as a base for the 2012 mid-year population estimates and the population projections used within the allocation of RSG. The detail of the subsequent data releases are set out in the action plan attached to this report.

## National Context

1.5 The first 2011 Census data was released on the 16<sup>th</sup> July 2012. The Census found that the population of England and Wales was 56.1 million (53 million in England and 3.1 million in Wales respectively). This represents an increase of 7.1 % the largest growth seen in any ten year period since the census began in 1801. The increases are mainly due to net migration and increased births over death.

1.6 Census data has provided confirmation of the rising age profile, with the median age of the population of the population in England and Wales at 39. For men, the median age was 38 and for women it was 40. In 1911, the median age was 25 and in 2001 it was 37.

- The population aged 65+ is the highest ever seen at 16.4%, which is 1 in 6 people.
- There were 430,000 residents aged over 90+ and over in 2011 compared with 340,000 in 2001 and 13,000 in 1911.

1.7 The number of children is also rising, as in 2011 there were 3.5 million under 5 in England and Wales, 406,000 more than in 2001.

- 1.8 All regions in England saw population growth between 2001 and 2011, with the highest growth in London and the southern regions accounting for approximately two thirds of the population growth.
- 1.9 At a local authority level the population in 17 of the 348 authorities has declined over the last decade. In terms of percentage increases, the local authorities with the largest growth in population were Tower Hamlets and Newham in London. Manchester showed the third highest percentage growth in population since 2001.

### **Work Underway**

- 1.10 A significant amount of work is either underway or planned to understand the demographic profile of Doncaster's population, for example:
- **2011 Census Data** – work is underway by the Data Observatory and Corporate Policy and Performance Team (CPPT) to understand the implications for Doncaster of the first batch of 2011 Census information
  - **Local Economic Assessment (LEA) Update** – work is underway by the Council's Economic Policy and Commissioning Team to update the demographics Chapter of the LEA.
  - **Joint Strategic Needs Assessment** – undertaken by the Data Observatory every year to identify the current and future health and wellbeing needs of a local population.
- 1.11 It is timely to take stock of existing population analysis work and set out a plan to ensure there is effective co-ordination of this work to understand how Doncaster's population is changing, future trends and the implications for planning and commissioning of council and partner services.

## 2011 Census – Headlines

1.12 The first release of Census data has identified that:

### Overall

- Doncaster's Population is 302,400 (compared with 290,600 MYE 2010) Doncaster has seen the greatest difference (4.06%) when compared to the 2010 Mid-year Estimates in the Yorkshire and Humber Region. This is particularly prominent in the 25-39 age brackets).<sup>12</sup>
- Doncaster has grown slightly slower than regional and national increases in the period 2001-2011.

### Children and Young People's Population

- The number of younger people (0-19) has decreased slightly (2.2% reduction) from 2001-2011.
- The number of children and young people (0-19) is 3.3% higher when compared to the 2010 mid-year estimates (latest information prior to the release of the census) and 4.9% higher in the 0-4 year age band.

### Working Age Population

- The number of working age people (20-64) has increased in line with national increases from 2001-2011.
- The number of working age (20-64) is 5.4% higher when compared to the 2010 mid-year estimates (latest information prior to the release of the census) but particularly the 25-29 and 30-34 age band which are 12.9% and 14.8% higher respectively.

### Older People's Population

- The number of older people (65+) has increased slightly slower than national increases from 2001-2011 but the number of people over 85 have increased more than the national average a 39.1% increase compared to 23.1% nationally.
- The number of older people is similar to the 2010 mid-year estimates (latest information prior to the release of the census). However the number of people aged over 85 is 6.7% higher.

---

<sup>1</sup> There is an expectation that the 2010 Mid-Year Estimates will be slightly different to the Census 2011 as they are taken at different points in time.

<sup>2</sup> The increase in population in Doncaster will have an impact on the denominators we use in our performance information i.e. our JSA rate will fall.

## Doncaster Population

- 1.13 Figure 1 shows the population of Doncaster since 1981 and includes information from the previous four census collections. The first three Census years (1981-2001) are all within a band of 5000 (291,700-286,700) whereas the latest information for 2011 shows a difference of 10,000 above the highest previous figure recorded for Doncaster at the 1991 Census. This is a 5.4% increase from 2001 to 2011 which is slightly below the increase at regional and national of 6.2 and 7.2 respectively. *The population in Doncaster has not grown as quickly as the regional or national average in the past ten years.*

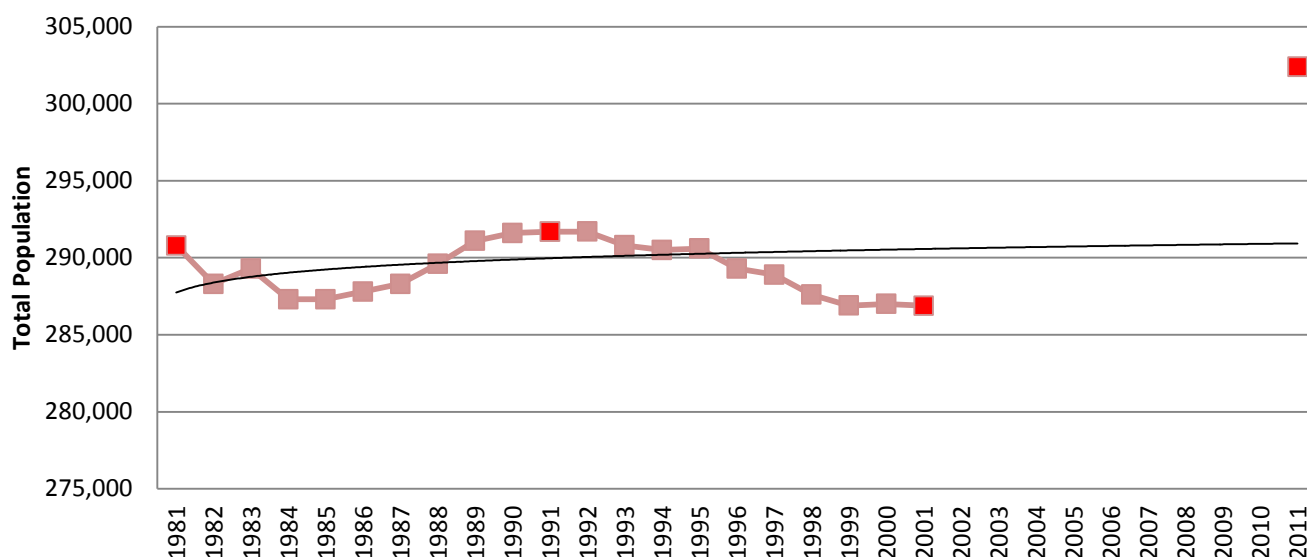


Figure 1: Doncaster population 1981-2011 (Red marker indicates Census year, Black line indicates trend)<sup>3</sup>

- 1.14 The population increase in Doncaster has not increased as fast as national and regional average but has increased in line with the Sheffield City Regional average. Figure 2 shows the change for each local authority in the Sheffield City region where as expected the largest increase has been in Sheffield.

Area	2001	2011	Act Diff	% Diff
Barnsley	218,100	231,200	13,100	6.0%
<b>Doncaster</b>	<b>286,900</b>	<b>302,400</b>	<b>15,500</b>	<b>5.4%</b>
Rotherham	248,300	257,300	9,000	3.6%
Sheffield	513,100	552,700	39,600	7.7%
Bassetlaw	107,800	112,900	5,100	4.7%
Bolsover	71,900	75,900	4,000	5.6%
Chesterfield	98,800	103,800	5,000	5.1%
Derbyshire Dales	69,400	71,100	1,700	2.4%
North East Derbyshire	96,900	99,000	2,100	2.2%
Sheffield City Region	1,711,400	1,806,300	94,900	5.5%
Yorkshire & Humber	4,976,600	5,283,700	307,100	6.2%
England	49,449,700	53,012,500	3,562,800	7.2%

Figure 2: Population Change 2001-2011 for Sheffield City Region<sup>4</sup>

<sup>3</sup> Population 1981-2001 Extracted NOMIS, 2002-2010 MYE excluded, 2011 ONS Census 2011 first release.

<sup>4</sup> Population 2001 extracted NOMIS, 2011 Census 2011 first Release

1.15 Up until the first release of Census 2011 data the most recent data available used was the Mid-Year Estimates 2010. These are estimates provided by the office of national statistics each year between census publications. Figure 3 illustrates the differences between the Mid-Year Estimates 2010 and the Census 2011 publication. Doncaster had the largest positive variance (i.e. more people in Doncaster) between these figures in the region.

	<b>2010 MYE</b>	<b>2011 Census</b>	<b>Act Diff</b>	<b>% Diff</b>
<b>ENGLAND</b>	<b>52,234,000</b>	<b>53,012,500</b>	<b>778,500</b>	<b>1.49%</b>
<b>Yorkshire &amp; Humber</b>	<b>5,301,300</b>	<b>5,283,700</b>	<b>-17,600</b>	<b>-0.33%</b>
North Yorkshire	599,800	598,400	-1,400	-0.23%
Craven	55,400	55,400	0	0.00%
Hambleton	87,600	89,100	1,500	1.71%
Harrogate	158,700	157,900	-800	-0.50%
Richmondshire	53,000	52,000	-1,000	-1.89%
Ryedale	53,600	51,700	-1,900	-3.54%
Scarborough	108,600	108,800	200	0.18%
Selby	82,900	83,500	600	0.72%
South Yorkshire	1,328,300	1,343,600	15,300	1.15%
Barnsley	227,600	231,200	3,600	1.58%
<b>Doncaster</b>	<b>290,600</b>	<b>302,400</b>	<b>11,800</b>	<b>4.06%</b>
Rotherham	254,600	257,300	2,700	1.06%
Sheffield	555,500	552,700	-2,800	-0.50%
West Yorkshire	2,249,500	2,226,100	-23,400	-1.04%
Bradford	512,600	522,500	9,900	1.93%
Calderdale	202,700	203,800	1,100	0.54%
Kirklees	409,800	422,500	12,700	3.10%
Leeds	798,800	751,500	-47,300	-5.92%
Wakefield	325,600	325,800	200	0.06%
East Riding of Yorkshire UA	338,700	334,200	-4,500	-1.33%
Kingston upon Hull, City of UA	263,900	256,400	-7,500	-2.84%
North East Lincolnshire UA	157,300	159,600	2,300	1.46%
North Lincolnshire UA	161,300	167,400	6,100	3.78%
York UA	202,400	198,000	-4,400	-2.17%

**Figure 3: Population comparisons between Census 2011 and ONS MYE 2010<sup>5</sup>**

1.16 There are a number of implications that arise from this change;

- Resident population informs funding allocations for Local authorities and partners
- Benchmarking information will use population denominators to determine performance comparisons – a rise in the population denominator will reduce the rate (i.e. crimes per 1000 population will reduce) in Doncaster more so than in any other area across the region.
- Population projections we have been using will now need to be revised upwards.

<sup>5</sup> ONS Mid-Year Estimates 2010, Census 2011 First Release.

## Young People (aged 0-19)

1.17 The number of younger people (0-19) has decreased slightly in Doncaster particularly in the 5-9 and 10-14 age brackets. Although decreases have been seen nationally these are more pronounced in Doncaster in both of these age brackets. This decline may have an adverse impact on our working age population in the short to medium term. The increase in the 0-4 age bracket in Doncaster of 13.8% is similar to the national increase but the increase seen in 15-19 age group is not as high as the national increase and together all of these factors mean that *in Doncaster the number of people aged 0-19 in Doncaster has decreased slightly over the past ten years.*

Age	Doncaster				England			
	2001	2011	Diff Act	Diff %	2001	2011	Diff Act	Diff %
<b>Aged 0-4</b>	16876	19200	2324	13.8%	2923800	3318500	394700	13.5%
<b>Aged 5-9</b>	18955	17100	-1855	-9.8%	3120800	2972600	-148200	-4.7%
<b>Aged 10-14</b>	20094	17400	-2694	-13.4%	3238100	3080900	-157200	-4.9%
<b>Aged 15-19</b>	18314	18900	586	3.2%	3045000	3340300	295300	9.7%
<b>All 0-19</b>	74239	72600	-1639	-2.2%	12327700	12712300	384600	3.1%

Figure 4: Population Change 0-19 Year Olds 2001-2011 Doncaster & England<sup>6</sup>

1.18 In 2011 the proportion of young people in Doncaster was similar to the national and regional comparisons. A slight anomaly occurs in the 15-19 age range where Doncaster has the same proportion but is less than the South Yorkshire figures. This is probably explained by the influx and retention of 19 year olds attending university in Sheffield creating a bias in the South Yorkshire figures.

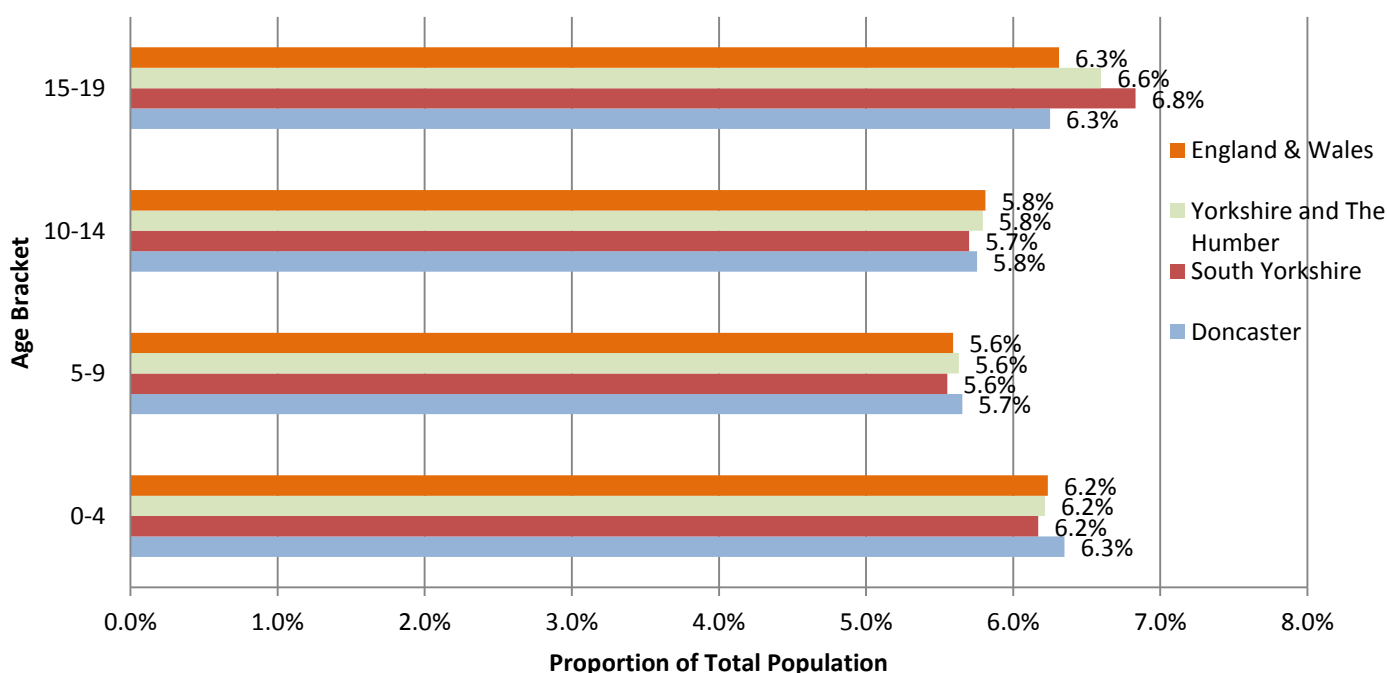


Figure 5: Proportion of Population by Age Band for 0-19 Age groups 2011<sup>7</sup>

<sup>6</sup> Population 2001 extracted NOMIS, 2011 Census 2011 first Release

<sup>7</sup> Census 2011 First Release

1.19 The population for Doncaster in the Census 2011 first release was different to what was estimated in the 2010 mid-year estimates. The variances between the two data sets for Doncaster are shown in Figure 6. *Doncaster has more young people than the Mid-Year Estimates predicted for Doncaster.* This may be of particular note for those in Children's services and health as higher numbers/proportions of young people may require services.

	Doncaster			
	2010 MYE	2011 Census		
Age	Total Pop	Total Pop	Diff Act	Diff %
<b>Aged 0-4</b>	18300	19200	900	4.9%
<b>Aged 5-9</b>	16400	17100	700	4.3%
<b>Aged 10-14</b>	17000	17400	400	2.4%
<b>Aged 15-19</b>	18600	18900	300	1.6%
<b>All 0-19</b>	70300	72600	2300	3.3%

Figure 6: Census 2011 Data comparison with Mid-Year Estimates 2010 (0-19 years)<sup>8</sup>

1.20 The comparison between the Local Authorities in the Ofsted/APA comparator group on the proportion of 0-19 year olds in the total population shows the proportion in Doncaster is the same as the national average and similar to the mean of the comparator group authorities.

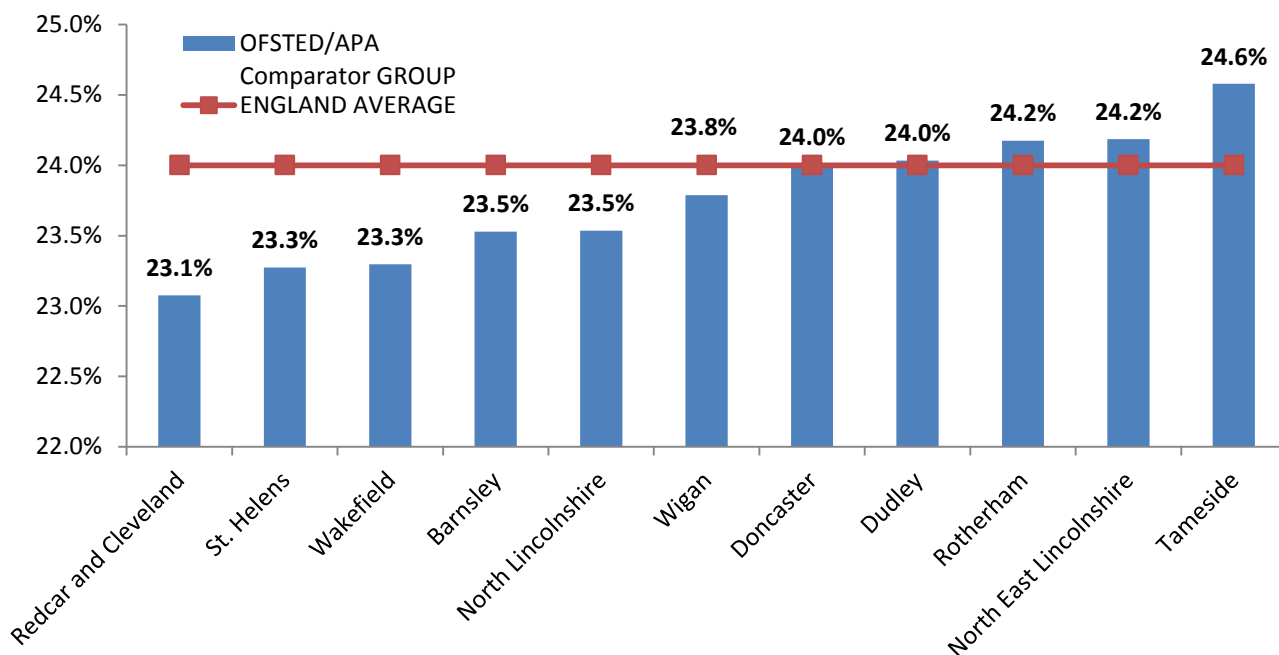


Figure 7: Census 2011 Proportion of 0-19 year old in the total population<sup>9</sup>

1.21 Population projections for young people (0-17) up until the Census data release predicted a slow increase up to 2030. However with the changes in the various age bands compared to what was presented in the 2010 mid-year estimates of population it is likely that all population projections will need some form of revision in the short term.

<sup>8</sup> ONS Mid-Year Estimates 2010, Census 2011 First Release.

<sup>9</sup> Census 2011 First Release Data using Ofsted/CPA comparator groups



## Working Age Population (20-64)

1.22 The working age population has increased at similar levels to what was experienced nationally over the last ten years. Furthermore the individual age bands have on the whole performed similar to the national change with two exceptions. Firstly the 25-29 age band has grown more in the last ten years in Doncaster at 22.4% compared with 9.9% nationally and secondly the age bands 30-44 have either declined more or not grown at the same rate as the national average.

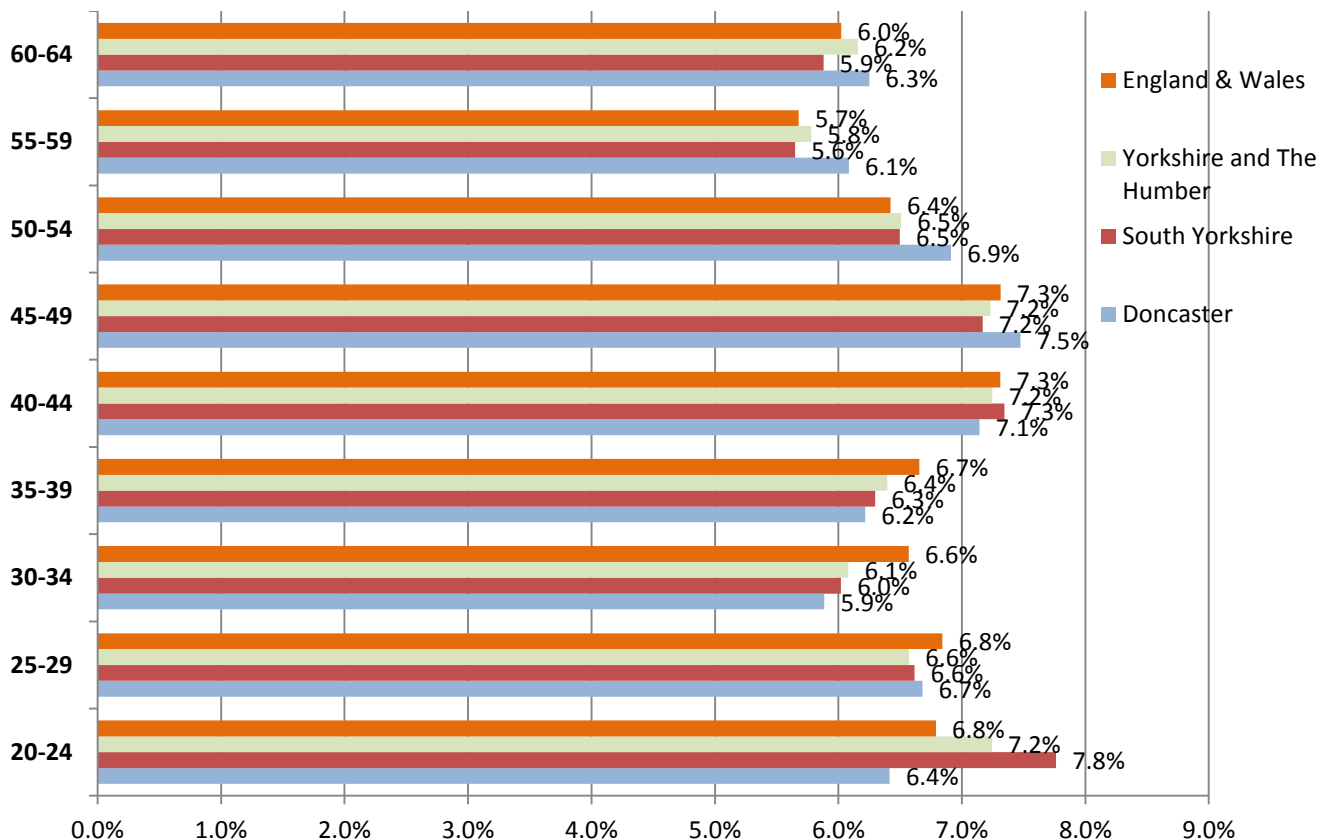
Age	Doncaster				England			
	2001 Total Pop	2011 Total Pop	Diff Act	Diff %	2001 Total Pop	2011 Total Pop	Diff Act	Diff %
<b>20-24</b>	14900	19400	4500	30.2%	2986600	3595300	608700	20.4%
<b>25-29</b>	16500	20200	3700	22.4%	3320500	3650900	330400	9.9%
<b>30-34</b>	20600	17800	-2800	-13.6%	3850600	3509200	-341400	-8.9%
<b>35-39</b>	22500	18800	-3700	-16.4%	3919000	3549100	-369900	-9.4%
<b>40-44</b>	21000	21600	600	2.9%	3487900	3885900	398000	11.4%
<b>45-49</b>	18500	22600	4100	22.2%	3129000	3879800	750800	24.0%
<b>50-54</b>	20000	20900	900	4.5%	3364800	3400100	35300	1.1%
<b>55-59</b>	16900	18400	1500	8.9%	2832800	2997000	164200	5.8%
<b>60-64</b>	14700	18900	4200	28.6%	2395500	3172300	776800	32.4%
<b>Total 20-64</b>	165600	178600	13000	7.9%	29286700	31639600	2352900	8.0%

Figure 8: Population Change 20-64 Year Olds 2001-2011 Doncaster & England<sup>10</sup>

1.23 In 2011 the proportion of working age population in Doncaster can be broadly seen in two distinct age bands, 20-44 and 44-64. In Doncaster the young age bands (20-44) have a slightly lower proportion of population when compared with our regional and national comparisons, particularly the 20-24 age band which again can probably be explained by the amount of higher education provision available in the Borough. Overall for the 20-44 age groups the proportion of population in Doncaster is 32.3% compared with the national average of 34.3%; if Doncaster was similar to the national average then there would be around 6000 more people in this age group.

1.24 This is contrasted to the older working age population (45-64) where the proportion of population in Doncaster is higher than regional and national comparisons. The proportion of population in this age band is in Doncaster is 26.7% compared with 25.4% nationally, if Doncaster had similar proportions to the national average there would be 3268 less people in this age bracket. This is particularly significant in commissioning terms for health and adult social care as the proportion of people in Doncaster who may need these types of services in the medium term is higher and coupled with an ageing population pressure on services will increase.

<sup>10</sup> Population 2001 extracted NOMIS, 2011 Census 2011 first Release



**Figure 9: Proportion of Population by Age Band for 20-64 Age groups 2011<sup>11</sup>**

1.25 The population for Doncaster in the Census 2011 first release was different to what was estimated in the 2010 mid-year estimates. The variances between the two data sets for Doncaster are shown in Figure 10. *Doncaster has more Working age people than the Mid-Year Estimates predicted for Doncaster.* This is particularly prominent in the age bands 25-29 and 30-34 which could be due in part to inward migrations from Eastern Europe in the period 2005-2010. It would be beneficial to explore this change through our Local Economic Assessment and subsequent Census releases.

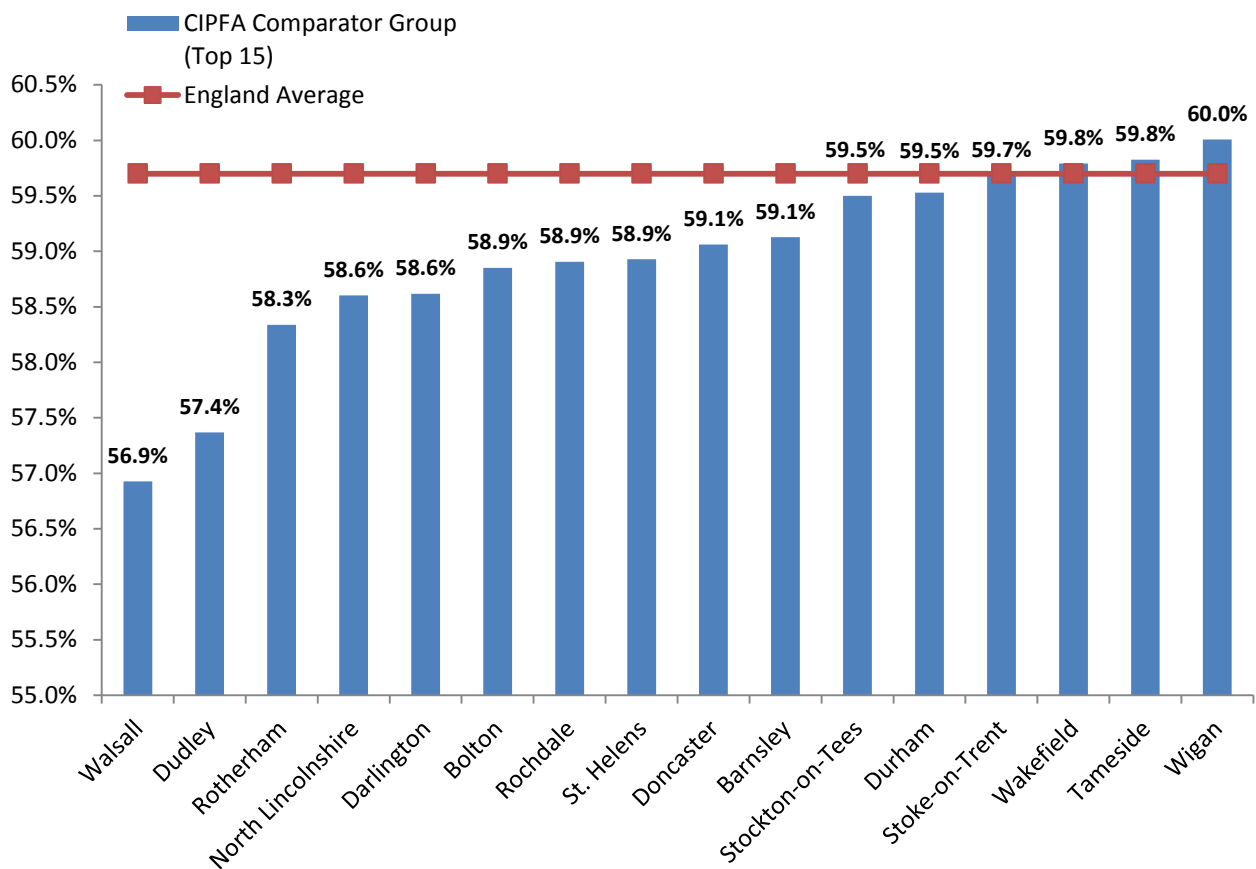
	Doncaster			
	2010 MYE	2011 Census		
Age	Total Pop	Total Pop	Diff Act	Diff %
20-24	18500	19400	900	4.86%
25-29	17900	20200	2300	12.85%
30-34	15500	17800	2300	14.84%
35-39	17800	18800	1000	5.62%
40-44	21100	21600	500	2.37%
45-49	22300	22600	300	1.35%
50-54	20200	20900	700	3.47%
55-59	17600	18400	800	4.55%
60-64	18600	18900	300	1.61%
Total 20-64	169500	178600	9100	5.37%

**Figure 10: Census 2011 Data comparison with Mid-Year Estimates 2010 (20-64) years<sup>12</sup>**

<sup>11</sup> Census 2011 First Release

<sup>12</sup> ONS Mid-Year Estimates 2010, Census 2011 First Release.

1.26 Figure 11 shows the proportion of population in the 20-64 age band by comparator authority for 2011. It is clear that although Doncaster is slightly below the national average proportion it is similar to the list of comparators for this age group. There has been a growing assumption that there is a significant difference in working age population but this suggests that currently this is not the case.



**Figure 11: Census 2011 Proportion of 20-64 year old in the total population<sup>13</sup>**

1.27 Population projections prior to the Census 2011 for the working age population showed that the working age population (18-64) would slowly decrease by 3% up to 2030. Further work already produced for the Sheffield City Region (but does not include Census 2011 data) show a number of scenarios; in all but one of these suggests a declining working age population. There are obvious ramifications of a decreasing working age population in terms of local economic policy and competitiveness against other large towns in the United Kingdom and beyond.

1.28 However with some significant changes in our age structure (some changes are over 10% for a five year age band) compared to what was presented in the 2010 mid-year estimates of population it is likely that all population projections will need some form of revision in the short term. It will be important to know when the Sheffield City Region projections and ONS projection will be ready to add to the information available in this paper.

<sup>13</sup> Census 2011 First Release Data using Ofsted/CPA comparator groups

## Older People Population (65+)

1.29 The older population has increased at a slightly slower rate than what was experienced nationally over the last ten years. Furthermore the individual age bands have on the whole performed similar to the national change with two exceptions. Firstly the number of people in the 65-69 age band has increased slower than what has been experienced nationally and secondly the number of people 80+ age group has increased more in the last ten years in Doncaster at 29.9% compared with the national increase of 17.4%.

Age	Doncaster				England			
	2001 Total Pop	2011 Total Pop	Diff Act	Diff %	2001 Total Pop	2011 Total Pop	Diff Act	Diff %
65-69	13700	14700	1000	7.30%	2160100	2508200	348100	16.11%
70-74	12400	12400	0	0.00%	1952900	2044100	91200	4.67%
75-79	10200	10200	0	0.00%	1644700	1669300	24600	1.50%
80-84	6100	7500	1400	22.95%	1119000	1258700	139700	12.48%
85+	4600	6400	1800	39.13%	958800	1180200	221400	23.09%
Total 65+	47000	51200	4200	8.94%	7835500	8660500	825000	10.53%

Figure 12: Population Change 65+ Year Olds 2001-2011 Doncaster & England<sup>14</sup>

1.30 In 2011 the proportion of older people in Doncaster can be broadly seen as similar to national and regional comparators. The overall proportion of people aged over 65 in Doncaster is 16.9% compared to 16.3% nationally. If the national proportion was applied to the Doncaster population there would be 1814 less people in that age group.

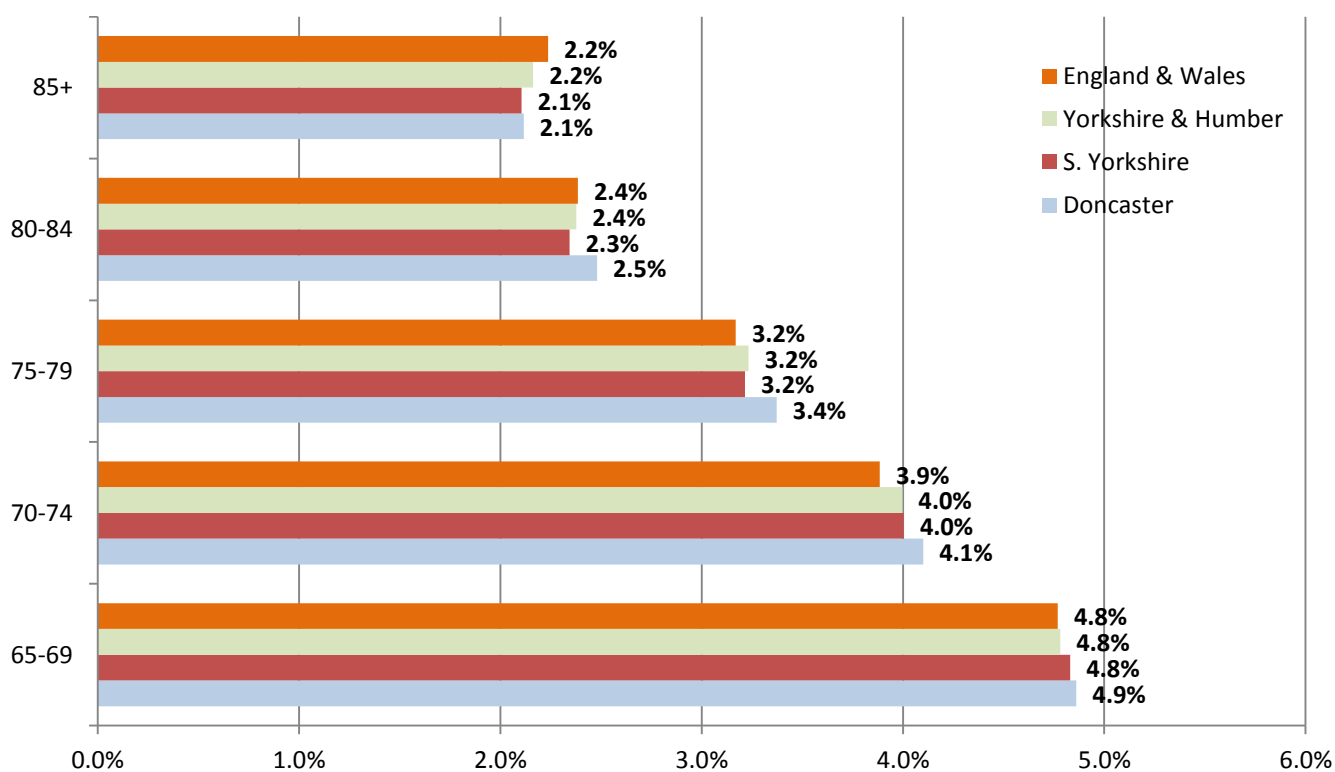


Figure 13: Proportion of Population by Age Band for 65+ Age groups 2011<sup>15</sup>

<sup>14</sup> Population 2001 extracted NOMIS, 2011 Census 2011 first Release

<sup>15</sup> Census 2011 First Release

1.31 Overall the older population in Doncaster is similar to what was estimated in the 2010 population data with the exception of the 85+ age bracket which was 6.7% higher than the latest data available to us and accounts for 80% of all variance in the older people population. This may be due to a number of reasons; possibly more people are living longer due to successful interventions in social care.

	Doncaster			
	2010 MYE	2011 Census		
Age	Total Pop	Total Pop	Diff Act	Diff %
65-69	14500	14700	200	1.38%
70-74	12500	12400	-100	-0.80%
75-79	10200	10200	0	0.00%
80-84	7500	7500	0	0.00%
85+	6000	6400	400	6.67%
Total 65+	50700	51200	500	0.99%

Figure 14: Census 2011 Data comparison with Mid-Year Estimates 2010 (65+) years<sup>16</sup>

1.32 Figure 15 shows the proportion of older people by comparator authority for 2011. Doncaster is similar to the national average and has a fairly typical proportion of older people when compared with similar authorities.

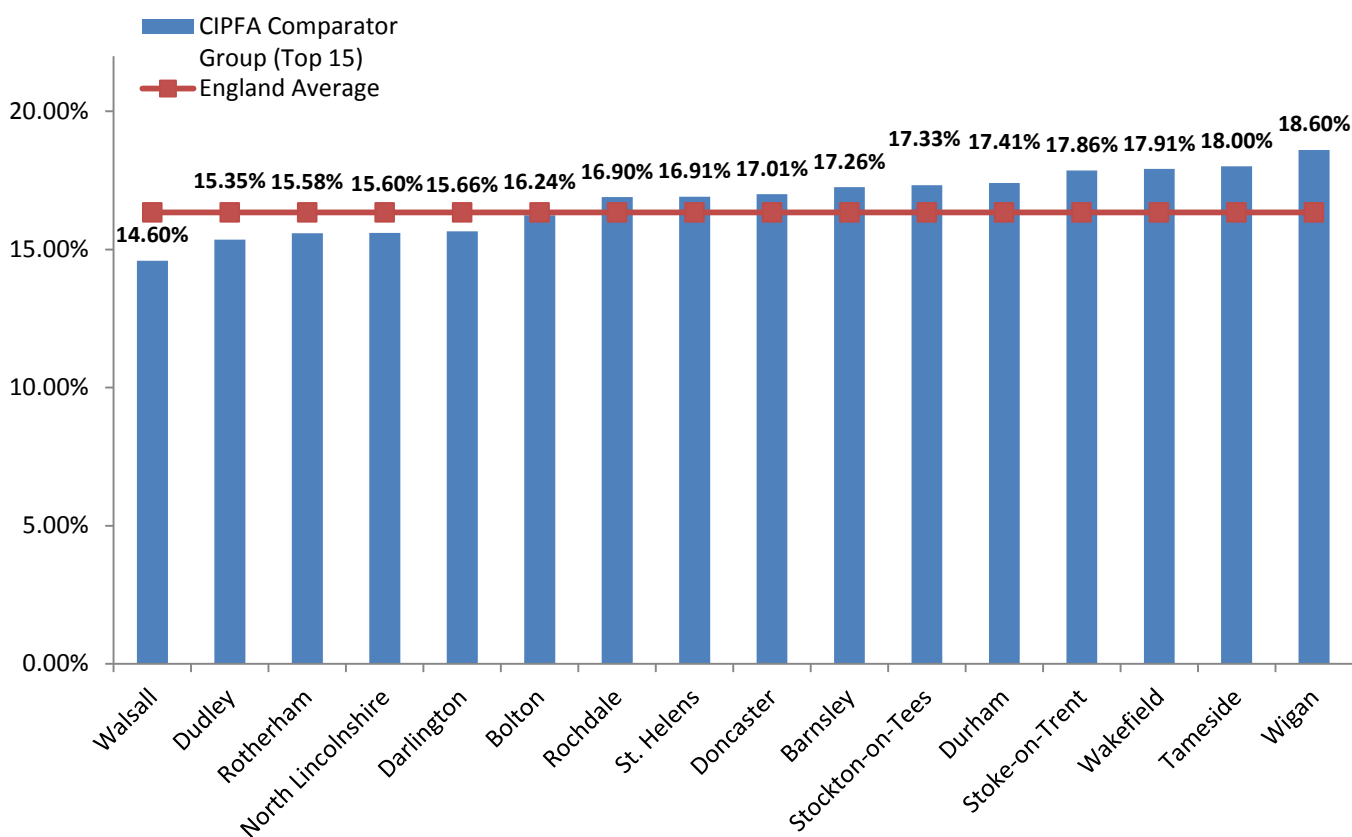


Figure 15: Census 2011 Proportion of 65+ year old in the total population<sup>17</sup>

<sup>16</sup> ONS Mid-Year Estimates 2010, Census 2011 First Release.

<sup>17</sup> Census 2011 First Release Data using Ofsted/CPA comparator groups

1.33 Population projections for older people show an upward trajectory almost universally across the country. In Doncaster the proportion of older people was set to increase by 8% by 2030 but as part of that increase the proportion of older people over 90 was set to increase by 24%. Although there are difficulties with population projections (as described in the younger and working age population sections) it is fairly certain we will experience a significant rise in older people over the next 10-20 years, particularly those over the age of 85.

### **Developing a shared vision**

1.34 A lot of work is already underway to address some of Doncaster's demographic trajectories where it is within the gift of the partnership to make a difference. Collectively the partnership can have an even greater impact than at the moment – 'but firstly a shared understanding of the current information is required to assist the partnership in understanding more about Doncaster, how it is changing and what the priorities for the future should be as the town seeks to fulfil the ambitions set out in the Borough Strategy. The planned October Partnership Stock Take event provides an ideal opportunity to progress this by bringing together a range of Doncaster data and analysis'.

### **Co-ordination & Action Planning**

1.35 The Doncaster Data Observatory, with the support of CPPT, is ideally placed to:

- Co-ordinate population analysis work
- Assist the partnership in developing a shared understanding of what the priorities for the future should be.
- Ensure there is a single definitive population evidence base with additional reports being produced as future data releases are available. In total this will be a compendium of reports with a focus on various data aspects i.e. Ethnicity.
- Annex 1 set out an Action Plan to bring all this all together.

### **Recommendations**

1.36 It is recommended that the Chief Officers Group:

- Consider and agree the Action Plan in Annex 1.
- Agree for these data to be part of a stocktake event in October 2012.
- Agree to cascade this information to other theme boards and to the Data Observatory page of the partnership website.
- Provide any feedback on any further clarification needed in this area.

## 2001 Census Analysis – Action Plan

Action	Who	When	Progress & Notes
Initial Scoping Meeting	Meeting between the Data Observatory, Corporate Policy and Performance Team (CPPT) and Economic Policy Team	20 <sup>th</sup> July 2012	Agreed that the Data Observatory Technical Group will be consulted on the merits of submitting a discussion paper to Chief Officers Group
Consult Data Observatory Technical Group on proposal to submit a discussion paper to Chief Officers Group	Andy Pattinson, Allan Wiltshire and Laurie Mott	25 <sup>th</sup> July 2012	It was agreed that a discussion paper should be submitted to Chief to the Officers Group.
Analyse First Census Data Release (July 2012)	Data Observatory	July – August 2012	Information at regional and LA level. Census population estimates by actual age and gender, by five year age bands
Data Observatory Technical Group to consider draft report to Chief Officers Group	Data Observatory	5 <sup>th</sup> September 2012	
Discussion Paper to Chief Officers Group	Data Observatory	13 <sup>th</sup> September 2012	
Update LEA Population Chapter with analysis provided by Data Observatory	Andy Pattinson	September 2012	The update of the LEA Population Chapter cannot be fully updated until all Census data released
Cascade report to Partnership Theme Boards	CPPT	September 2012	
Partnership Stock-take	Data Observatory	4 <sup>th</sup> October 2012	
Establish when further population projections work will be undertaken at the SCR level to take account of the census	Economy & Commissioning Team	October 2012	
Consider Second Census Data Release (November 2012 – February 2013)	Data Observatory	November 2012 – February 2013	Phased geographical releases. First, LSOA Local Authority, regions. Postcode estimates by gender and household. Second, Ward Level. Third, remaining geographies inc constituency. Will be mainly the same Census Outputs as the 2001 release. E.g.:

			<ul style="list-style-type: none"> <li>○ Usual resident population</li> <li>○ Age structure</li> <li>○ Living arrangements</li> <li>○ Marital and civil partnership status</li> <li>○ Country of birth</li> <li>○ Ethnic group</li> <li>○ Religion</li> <li>○ Health and provision of unpaid care</li> <li>○ Economic activity</li> <li>○ Hours worked</li> </ul>
Consider Third Census Data Release (March 2013 – June 2013)	Data Observatory	March 2013 – June 2013	<p>Same phased geography as second, e.g:</p> <ul style="list-style-type: none"> <li>○ Age by sex and resident type</li> <li>○ Sex and age by ethnic group</li> <li>○ Sex and age by economic activity</li> <li>○ Sex and age by general health and provision of unpaid care</li> <li>○ Country of birth by age and sex</li> <li>○ Sex and occupation by age</li> <li>○ Dwelling type and accommodation type by household space type.</li> </ul>
Fourth Release: July – October 2013	Data Observatory	July – October 2013	<p>For all geographies apart from output areas and LSOAs</p> <ul style="list-style-type: none"> <li>○ Detailed characteristics</li> </ul>